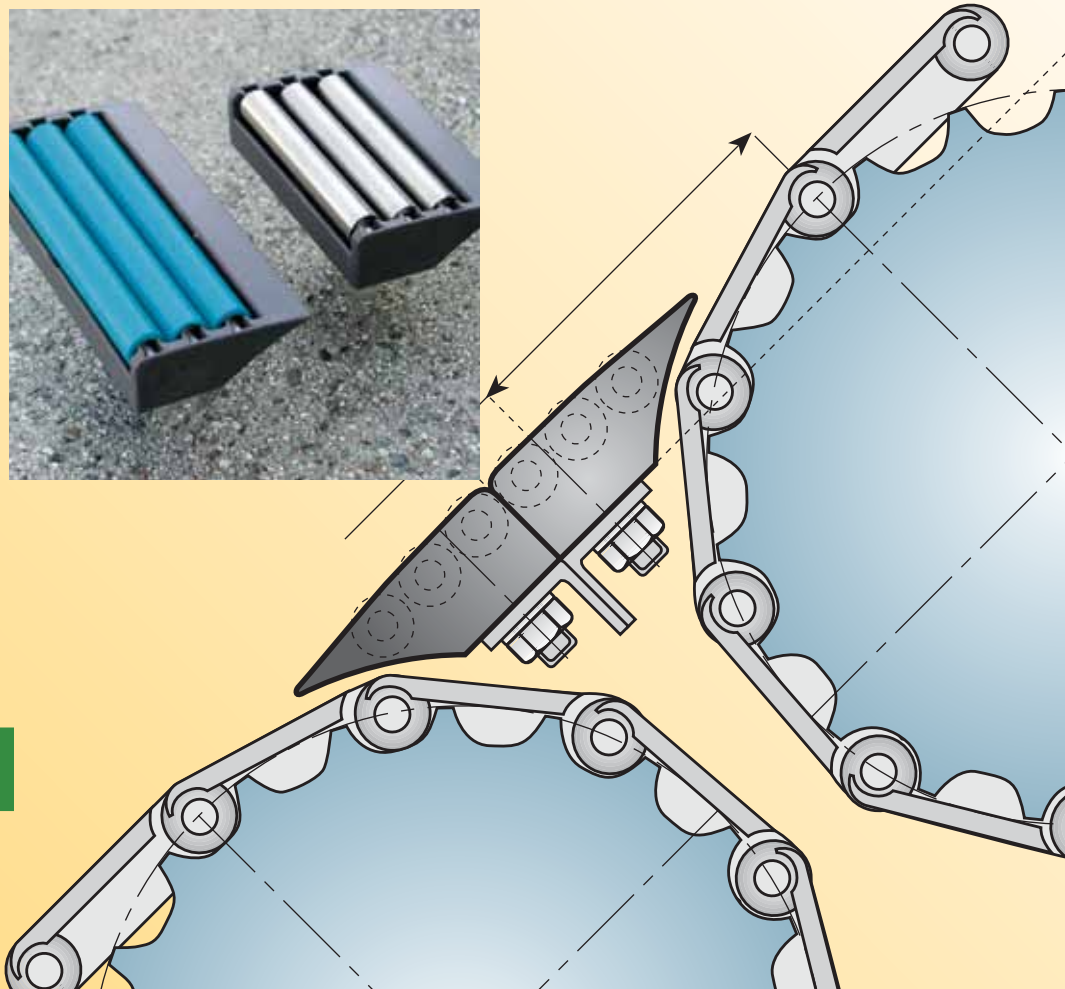


Transfer Plates



- **Standard & Heavy Duty**
- **Smooth Product Transitions**
- **Clean, Modular Design**
- **Durable Construction**
- **Multiple Roller Styles**
- **Easy, Flexible Mounting**
- **Low Friction, Low Noise**



Perfect for use with



Chains and Belts!

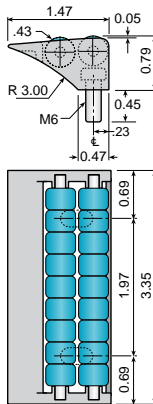
Modular Roller Transfer Plates

- ✓ Easy head to tail transfer
- ✓ Ultra low friction
- ✓ Low noise beads
- ✓ Clean design
- ✓ Back-to-back modularity
- ✓ End-to-end modularity
- ✓ Quick and easy mounting
- ✓ Mounting hardware included



Transfer Plate

2 bead or roller rows with sloped entry. 3.35 inch width.



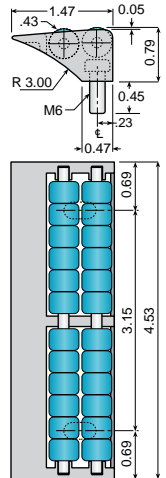
Material: XP acetal frame. Choice of multi-beads or rollers. Stainless steel pins, washers and bolts.



Part Number	Roller Type	Length (in.)
16777	Standard	3.35
16777-SR	SR	3.35
16777-SSA	SSA	3.35
16777-SS	SS	3.35

Transfer Plate

2 bead or roller rows with sloped entry. 4.53 inch width.



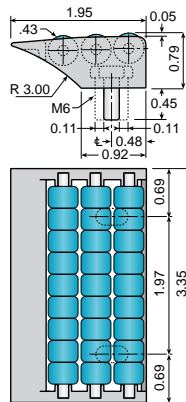
Material: XP acetal frame. Choice of multi-beads or rollers. Stainless steel pins, washers and bolts.



Part Number	Roller Type	Length (in.)
16778	Standard	4.53
16778-SR	SR	4.53
16778-SSA	SSA	4.53
16778-SS	SS	4.53

Transfer Plate

3 bead or roller rows with sloped entry. 3.35 inch width.



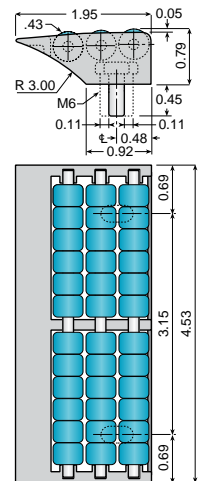
Material: XP acetal frame. Choice of multi-beads or rollers. Stainless steel pins, washers and bolts.



Part Number	Roller Type	Length (in.)
16770	Standard	3.35
16770-SR	SR	3.35
16770-SSA	SSA	3.35
16770-SS	SS	3.35

Transfer Plate

3 bead or roller rows with sloped entry. 4.53 inch width.



Material: XP acetal frame. Choice of multi-beads or rollers. Stainless steel pins, washers and bolts.



Part Number	Roller Type	Length (in.)
16771	Standard	4.53
16771-SR	SR	4.53
16771-SSA	SSA	4.53
16771-SS	SS	4.53



SR

Red low noise PBT roller.



SSA

Blue acetal roller with mini ball bearing.

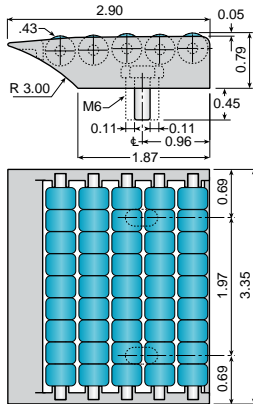


SS

Stainless steel roller with mini ball bearing.

Transfer Plate

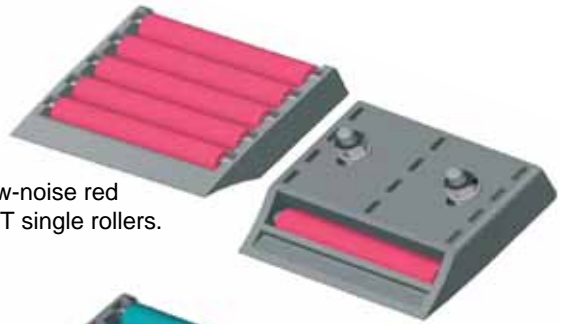
5 bead or roller rows with sloped entry. 3.35 inch width.



Material: XP acetal frame. Choice of multi-beads or rollers. Stainless steel pins, washers and bolts.

Part Number	Roller Type	Length (in.)
16772	Standard	3.35
16772-SR	SR	3.35
16772-SSA	SSA	3.35
16772-SS	SS	3.35

Low-noise red PBT single rollers.



Blue acetal single rollers with mini ball bearings.

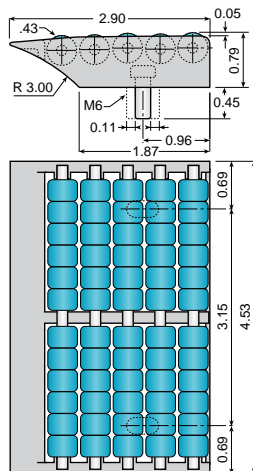


Stainless steel single rollers with mini ball bearings.



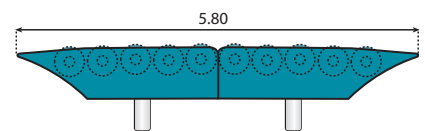
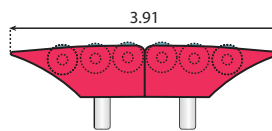
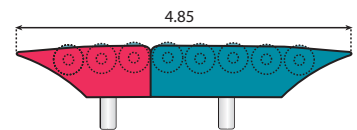
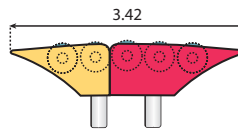
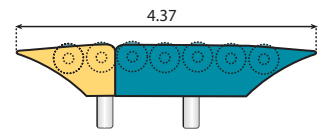
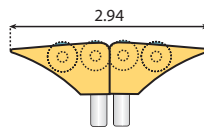
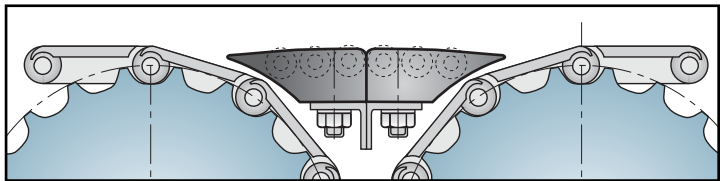
Transfer Plate

5 bead or roller rows with sloped entry. 4.53 inch width.



Material: XP acetal frame. Choice of multi-beads or rollers. Stainless steel pins, washers and bolts.

Part Number	Roller Type	Length (in.)
16773	Standard	4.53
16773-SR	SR	4.53
16773-SSA	SSA	4.53
16773-SS	SS	4.53



Transfer plates can be grouped in various back-to-back configurations to accommodate many distances between conveyors.

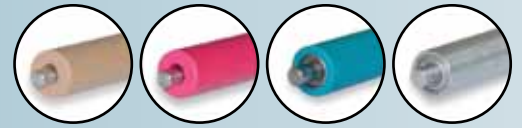
HEAVY DUTY

DYNAPLATE

Modular Roller Transfer Plates



A System Plast Group Company



Standard

Brown acetal roller.

SR

Red low noise PBT roller.

SSA

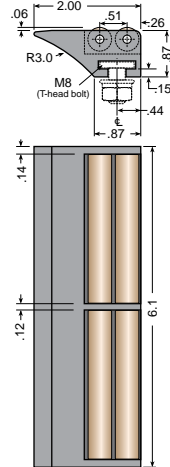
Blue acetal roller with mini ball bearing.

SS

Stainless steel roller with mini ball bearing.

Transfer Plate
2 roller rows with sloped entry. 6.1 inch width.

HEAVY DUTY

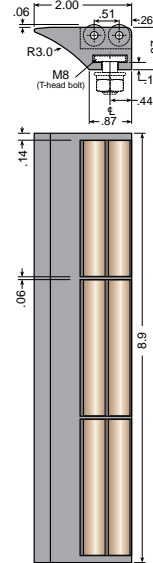


Material: XP acetal frame. Choice of roller types. Stainless steel pins, washers and bolts.

Part Number	Roller Type	Length (in.)
16S00020B	Standard	6.1
16S00020-SR	SR	6.1
16S00020-SSA	SSA	6.1
16S00020-SS	SS	6.1

Transfer Plate
2 roller rows with sloped entry. 8.9 inch width.

HEAVY DUTY

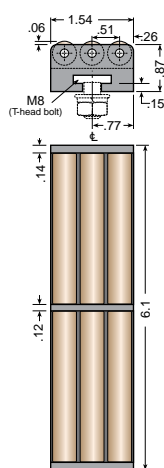


Material: XP acetal frame. Choice of roller types. Stainless steel pins, washers and bolts.

Part Number	Roller Type	Length (in.)
16S00023B	Standard	8.9
16S00023-SR	SR	8.9
16S00023-SSA	SSA	8.9
16S00023-SS	SS	8.9

Transfer Plate
3 roller rows. 6.1 inch width.

HEAVY DUTY

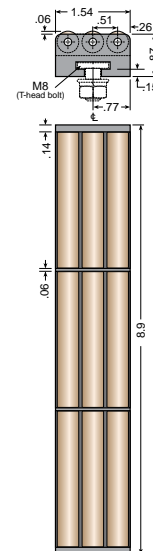


Material: XP acetal frame. Choice of roller types. Stainless steel pins, washers and bolts.

Part Number	Roller Type	Length (in.)
16S00021B	Standard	6.1
16S00021-SR	SR	6.1
16S00021-SSA	SSA	6.1
16S00021-SS	SS	6.1

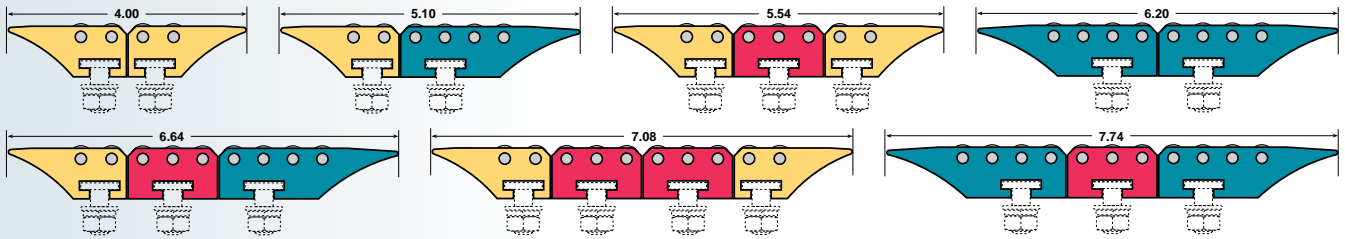
Transfer Plate
3 roller rows. 8.9 inch width.

HEAVY DUTY



Material: XP acetal frame. Choice of roller types. Stainless steel pins, washers and bolts.

Part Number	Roller Type	Length (in.)
16S00024B	Standard	8.9
16S00024-SR	SR	8.9
16S00024-SSA	SSA	8.9
16S00024-SS	SS	8.9

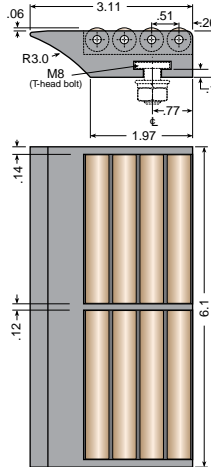


DynaPlate Combinations Mix and match for best transfer lengths and widths

Transfer Plate

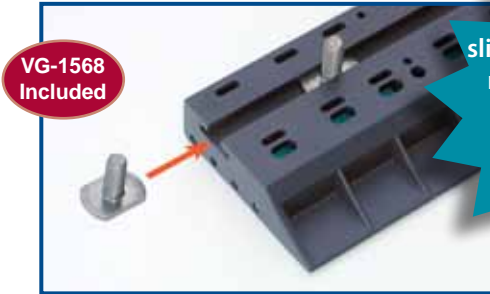
4 roller rows with sloped entry. 6.1 inch width.

HEAVY DUTY



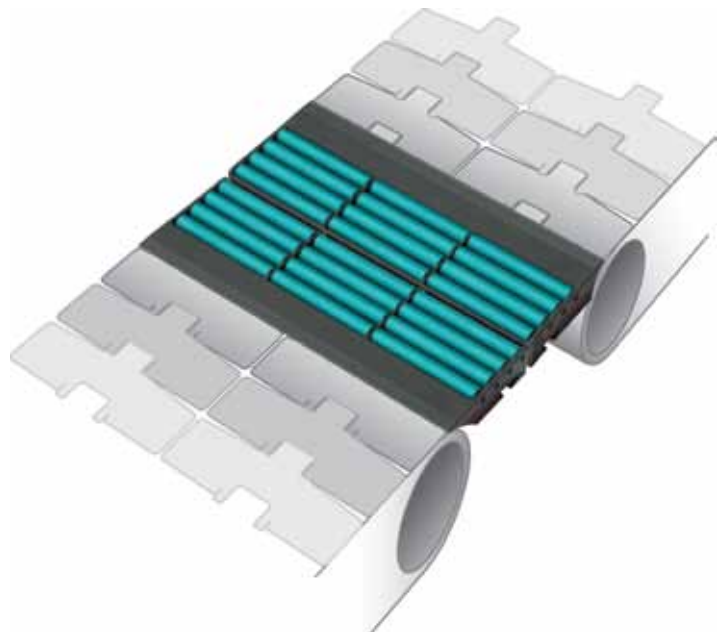
Material: XP acetal frame. Choice of roller types. Stainless steel pins, washers and bolts.

Part Number	Roller Type	Length (in.)
16S00022B	Standard	6.1
16S00022-SR	SR	6.1
16S00022-SSA	SSA	6.1
16S00022-SS	SS	6.1



VG-1568 Included

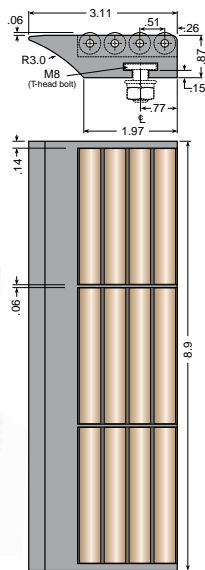
T-bolt slides for accurate mounting, but won't strip or turn during tightening!



Transfer Plate

4 roller rows with sloped entry. 8.9 inch width.

HEAVY DUTY



Material: XP acetal frame. Choice of roller types. Stainless steel pins, washers and bolts.

Part Number	Roller Type	Length (in.)
16S00025B	Standard	8.9
16S00025-SR	SR	8.9
16S00025-SSA	SSA	8.9
16S00025-SS	SS	8.9

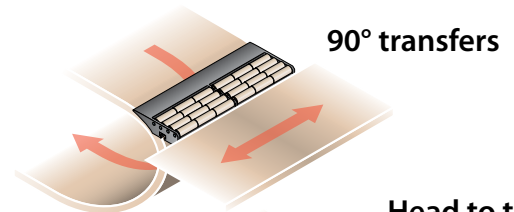


Improve Product Transfer Between Conveyors!

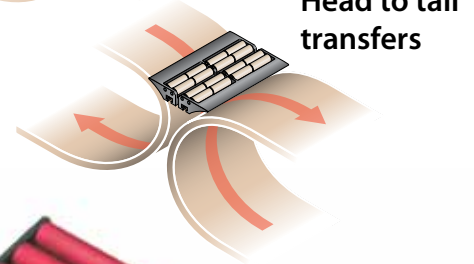


Smooth, high capacity product flow on conveyor lines is essential to keep up with today's demanding production methods in the food, beverage and packaging industry. This calls for smooth conveyor transfers that improve product stability. Solus has developed a wide range of high quality roller transfer plates for different package sizes, sprocket diameters, or chain and belt widths. Solus modular transfer plates are designed to aid required cleaning in tough applications like environments with sticky beverages.

Solus is committed to using only the best available resins for production. Our roller transfer plates are certainly no exception. This will guarantee you the best performance and wear life of all products properly chosen for each application.



90° transfers

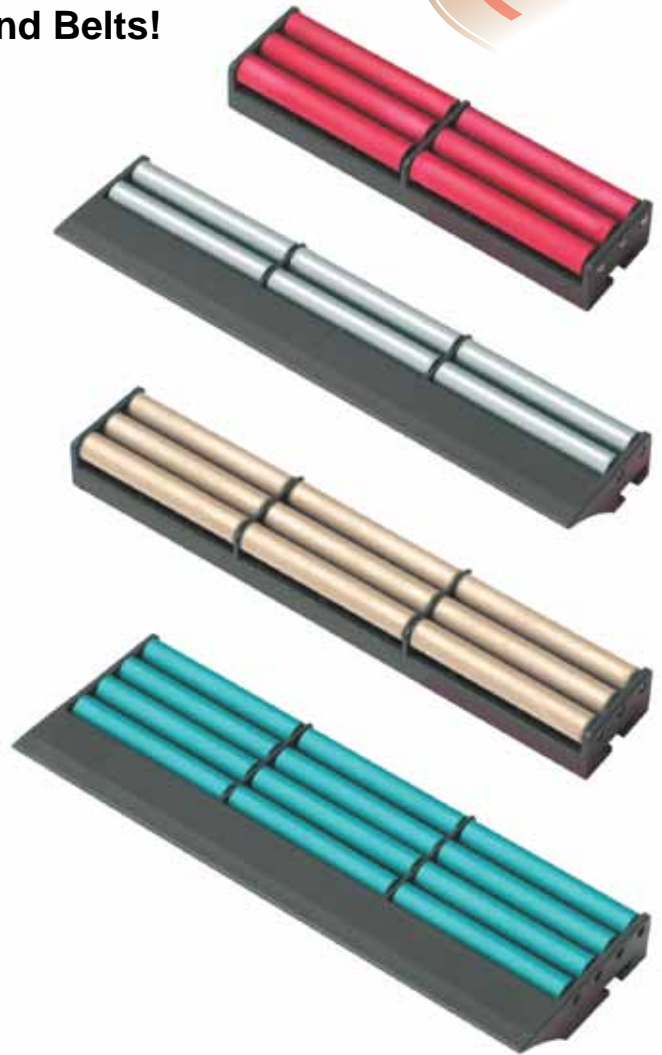
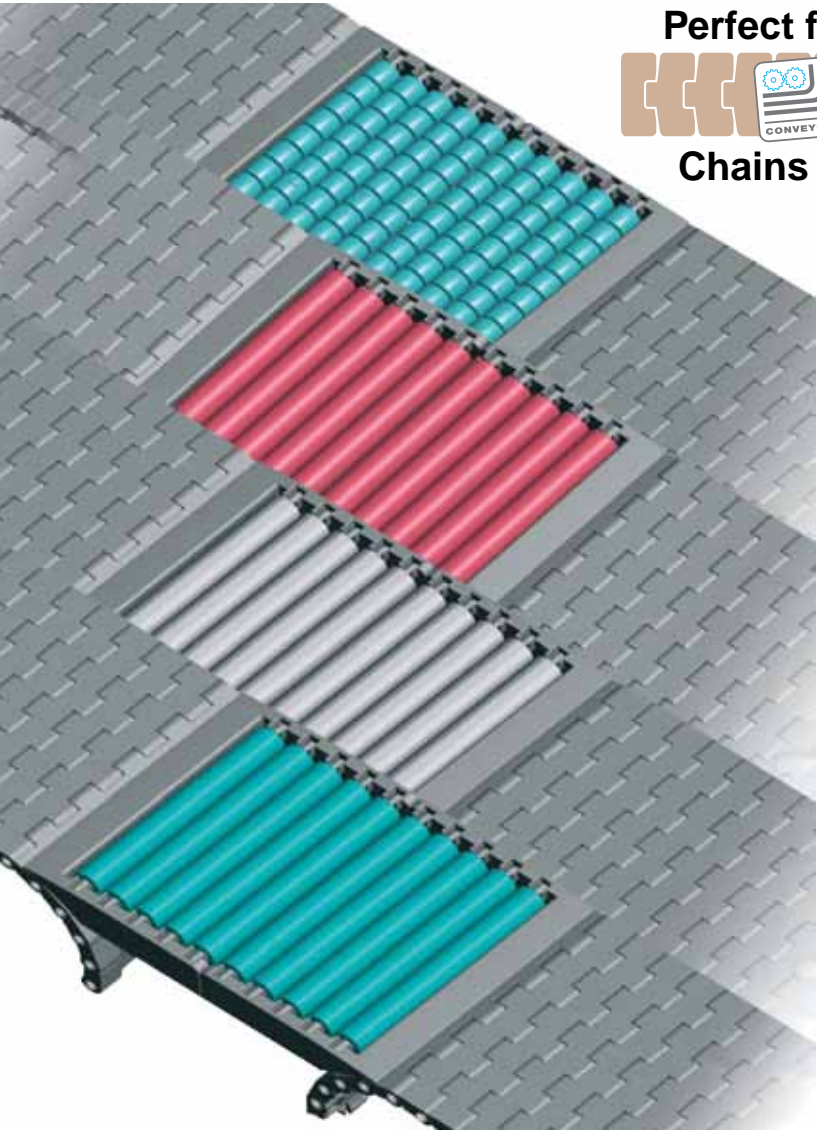


Head to tail transfers



Perfect for use with

Chains and Belts!



Customer Service: phone: (866) 765-8744 fax: (866) 447-6587
S o l u s i i 4 4 S o l u s



7120 New Buffington Road Florence, Kentucky 41042
Chino, California • Sanford, North Carolina • El Salto, Jalisco, Mexico

www.solusii.com

© 2007 Solus Industrial Innovations, LLC 10/09