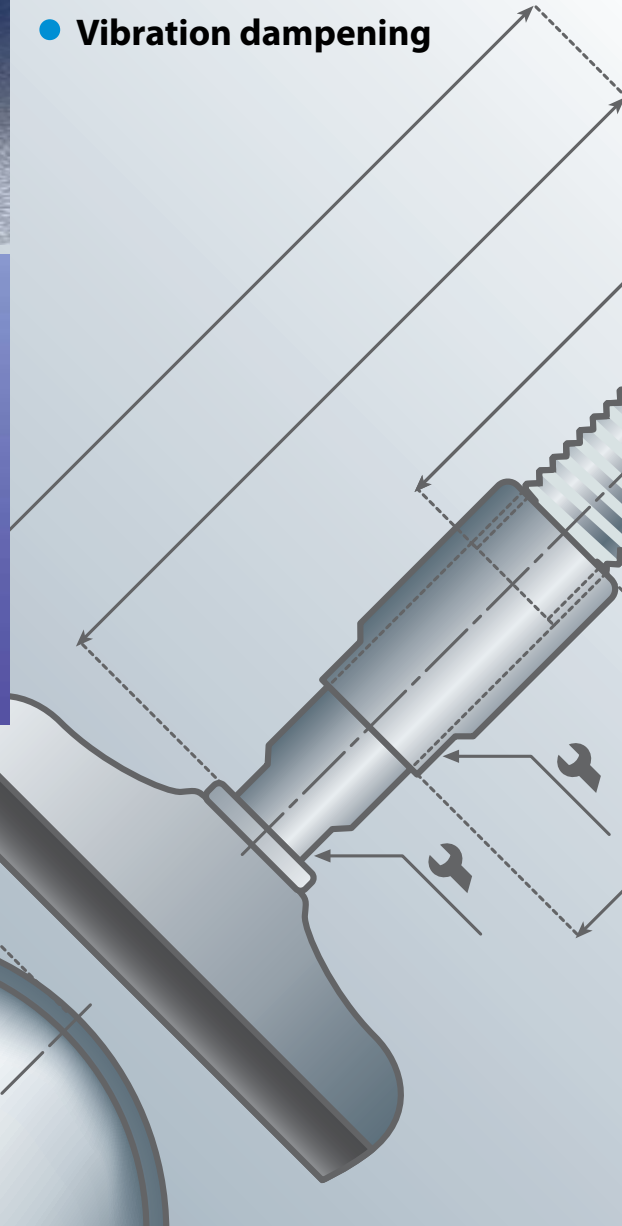


# Stainless Steel Leveling Pads



**SANISTAR**

- Hygienic design
- Polished, mirror finish
- Vibration dampening



## Features:

- Hygienic design
- Versions available with mounting hole
- Threaded stem articulation up to 4°
- High quality, 304 stainless steel construction

## Benefits:

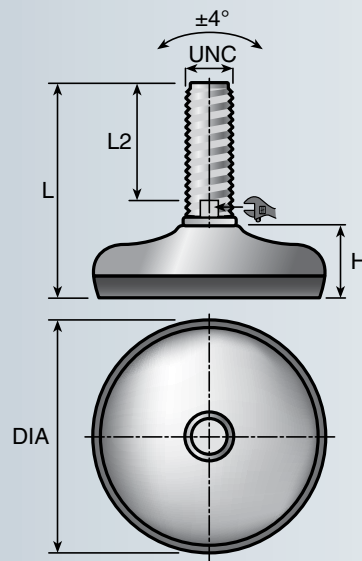
- Improved cleanliness
- Corrosion resistant
- Attractive
- Low maintenance

## Ideal applications:

- Frequent wash down conditions
- Alkaline, or acidic conditions
- Where stainless steel is the preferred material
- Areas with HACCP needs

## Stainless Steel Leveler

Conveyor and machinery support with built-in vibration pad, polished surface, and sanitary design.



**Base Material:** 304 Stainless steel and rubber (70 shore).  
**Stem material:** 304 Stainless steel.

### 2 Inch Diameter Base



Maximum Recommended Static Load: 680 lbs.

Part Number	Stem UNC Thread	H	L2	L
177003U	1/2-13	.83	2.75	3.75
177004U	1/2-13	.83	3.50	4.55
177006U	1/2-13	.83	5.0	6.10
177010U	5/8-11	.83	2.75	3.95
177011U	5/8-11	.83	4.25	5.50

### 3 Inch Diameter Base



Maximum Recommended Static Load: 1800 lbs.

Part Number	Stem UNC Thread	H	L2	L
177053U	1/2-13	.91	2.75	3.95
177054U	1/2-13	.91	3.50	4.70
177056U	1/2-13	.91	5.0	6.30
177060U	5/8-11	.91	2.75	3.95
177061U	5/8-11	.91	4.25	5.50
177062U	5/8-11	.91	6.15	7.50

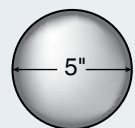
### 4 Inch Diameter Base



Maximum Recommended Static Load: 4500 lbs.

Part Number	Stem UNC Thread	H	L2	L
177104U	5/8-11	1.18	4.25	5.70
177105U	5/8-11	1.18	6.15	7.70
177108U	3/4-10	1.18	4.45	6.10
177109U	3/4-10	1.18	6.15	7.85
177110U	3/4-10	1.18	7.25	9.05

### 5 Inch Diameter Base



Maximum Recommended Static Load: 6800 lbs

Part Number	Stem UNC Thread	H	L2	L
177158U	3/4-10	1.26	4.45	6.10
177159U	3/4-10	1.26	6.15	7.85
177160U	3/4-10	1.26	7.25	9.05

General tolerance on total height (L dim) is ± .08 inch.

# Steel Leveling Pads



Anti-Slip Rubber



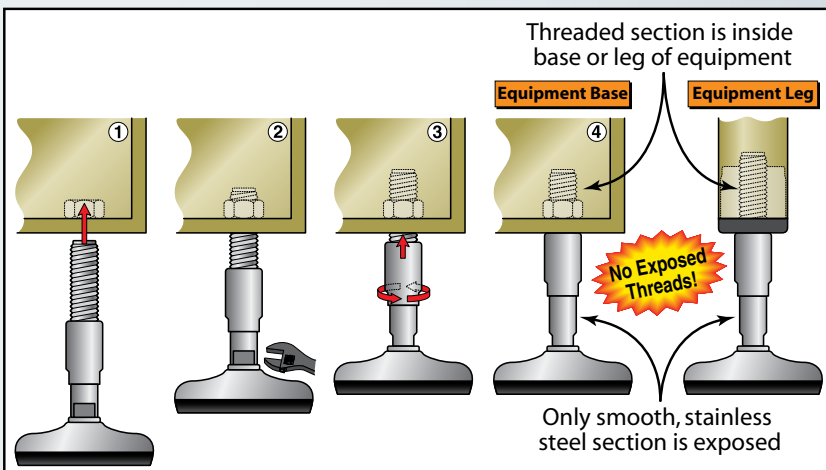
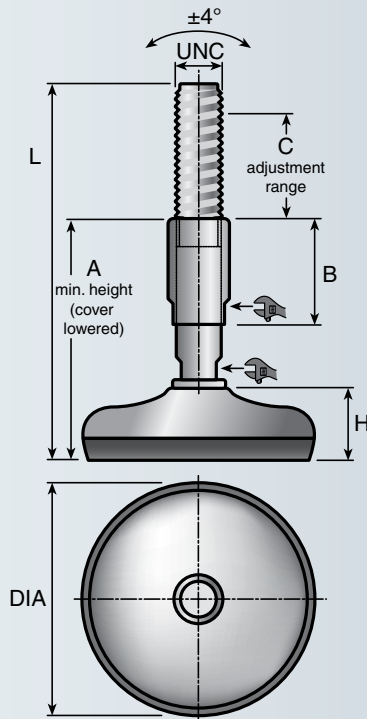
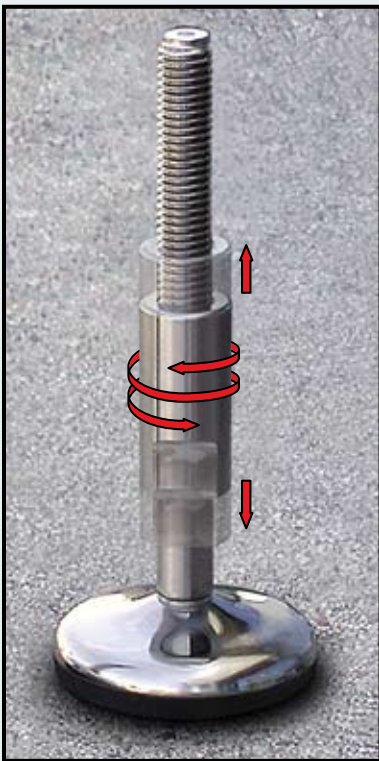
Special Thread Cover



Polished Surface

## Stainless Steel Leveler with Thread Cover

Conveyor and machinery support with built-in vibration pad, polished surface, and sanitary design.



Base Material: 304 Stainless steel and rubber (70 shore).  
Stem material: 304 Stainless steel.

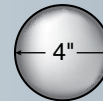
### 3 Inch Diameter Base with Thread Cover



Maximum Recommended Static Load: 1800 lbs.

Part Number	Stem UNC Thread	H	B	A	C	L
177300U	5/8-11	.91	2.17	3.55	1.45	7.30
177301U	5/8-11	.91	3.35	4.75	2.65	9.25
177302U	3/4-10	.91	2.17	3.55	1.45	7.30
177303U	3/4-10	.91	3.35	4.75	2.65	9.25

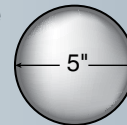
### 4 Inch Diameter Base with Thread Cover



Maximum Recommended Static Load: 4500 lbs.

Part Number	Stem UNC Thread	H	B	A	C	L
177310U	5/8-11	1.18	2.17	3.75	1.45	7.50
177311U	5/8-11	1.18	3.35	4.95	2.65	9.45
177312U	3/4-10	1.18	2.17	3.75	1.45	7.50
177313U	3/4-10	1.18	3.35	4.95	2.65	9.45

### 5 Inch Diameter Base with Thread Cover



Maximum Recommended Static Load: 6800 lbs

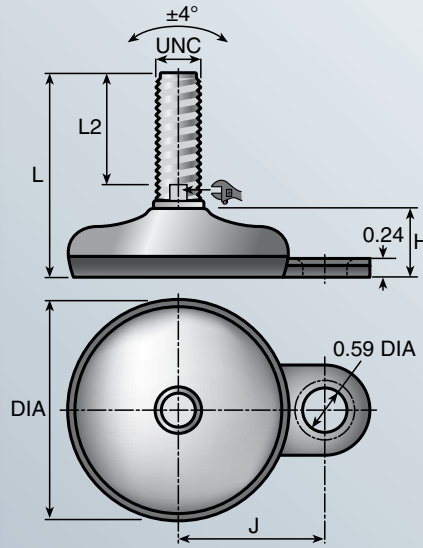
Part Number	Stem UNC Thread	H	B	A	C	L
177320U	5/8-11	1.26	2.17	3.95	1.45	7.70
177321U	5/8-11	1.26	3.35	5.15	2.65	9.65
177322U	3/4-10	1.26	2.17	3.95	1.45	7.70
177323U	3/4-10	1.26	3.35	5.15	2.65	9.65

General tolerance on total height (L dim) is ± .08 inch.



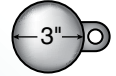
# Stainless Steel Leveler with Mounting Hole

Conveyor and machinery support with built-in vibration pad, polished surface, and sanitary design.



Base Material: 304 Stainless steel and rubber (70 shore).  
Stem material: 304 Stainless steel.

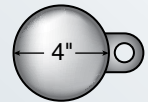
## 3 Inch Diameter Base with Mounting Hole



Maximum Recommended Static Load: 1800 lbs.

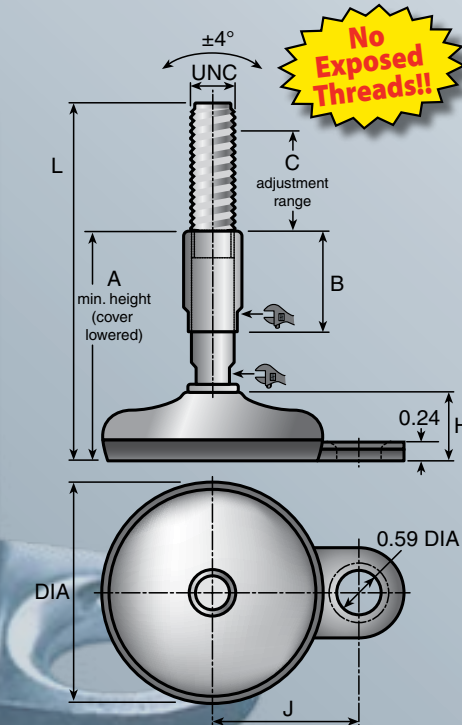
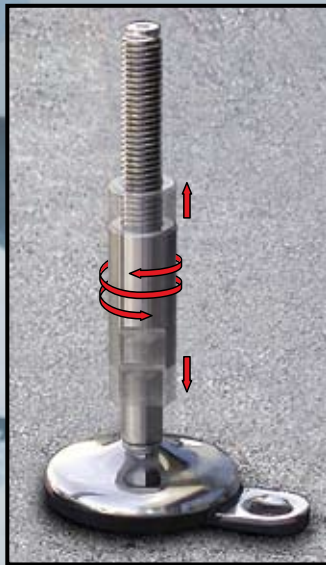
Part Number	Stem UNC Thread	H	J	L2	L
177203U	1/2-13	.91	2.07	2.75	3.95
177205U	1/2-13	.91	2.07	3.50	4.80
177206U	1/2-13	.91	2.07	5.0	6.30
177210U	5/8-11	.91	2.07	2.75	3.95
177211U	5/8-11	.91	2.07	4.25	5.50

## 4 Inch Diameter Base with Mounting Hole

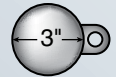


Maximum Recommended Static Load: 4500 lbs.

Part Number	Stem UNC Thread	H	J	L2	L
177254U	5/8-11	1.18	2.56	4.25	5.70
177255U	5/8-11	1.18	2.56	6.15	7.70
177258U	3/4-10	1.18	2.56	4.45	6.10
177259U	3/4-10	1.18	2.56	6.15	7.85
177260U	3/4-10	1.18	2.56	7.25	9.05



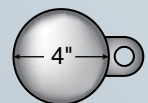
## 3 Inch Diameter Base with Mounting Hole



Maximum Recommended Static Load: 1800 lbs.

Part Number	Stem UNC Thread	H	B	J	A	C	L
177350U	5/8-11	.91	2.17	2.1	3.55	1.45	7.30
177351U	5/8-11	.91	3.35	2.1	4.75	2.65	9.25
177352U	3/4-10	.91	2.17	2.1	3.55	1.45	7.30
177353U	3/4-10	.91	3.35	2.1	4.75	2.65	9.25

## 4 Inch Diameter Base with Mounting Hole



Maximum Recommended Static Load: 4500 lbs.

Part Number	Stem UNC Thread	H	B	J	A	C	L
177360U	5/8-11	1.18	2.17	2.56	3.75	1.45	7.50
177361U	5/8-11	1.18	3.35	2.56	4.95	2.65	9.45
177362U	3/4-10	1.18	2.17	2.56	3.75	1.45	7.50
177363U	3/4-10	1.18	3.35	2.56	4.95	2.65	9.45

General tolerance on total height (L dim) is ± .08 inch.



**Customer Service:** toll free phone: (866) 765-8744 toll free fax: (866) 447-6587  
S O L U S I I 4 4 S O L U S



30152 Aventura Rancho Santa Margarita, California 92688 phone: (949) 589-3900 fax: (949) 858-0300  
Aston, Pennsylvania • Indianapolis, Indiana • Sanford, North Carolina

solusteam@solusii.com

www.solusii.com

© 2006 Solus Industrial Innovations, LLC 10/06