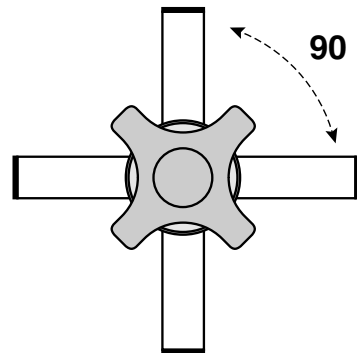
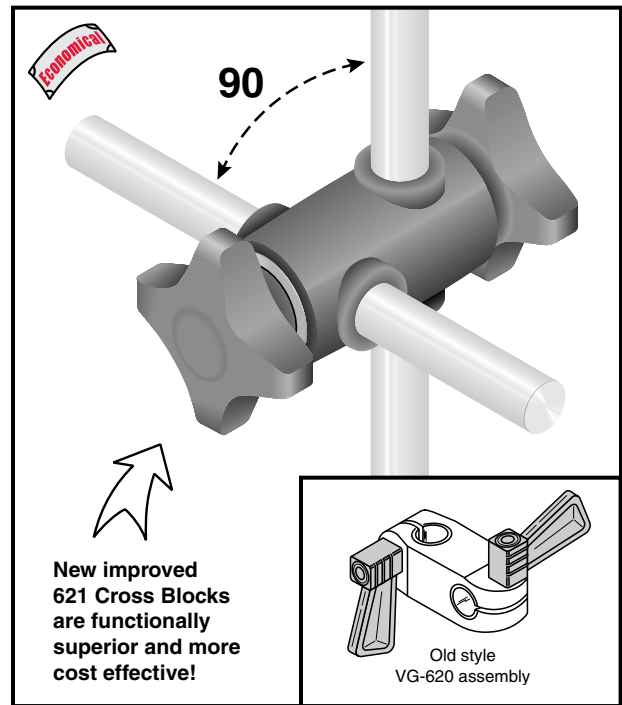
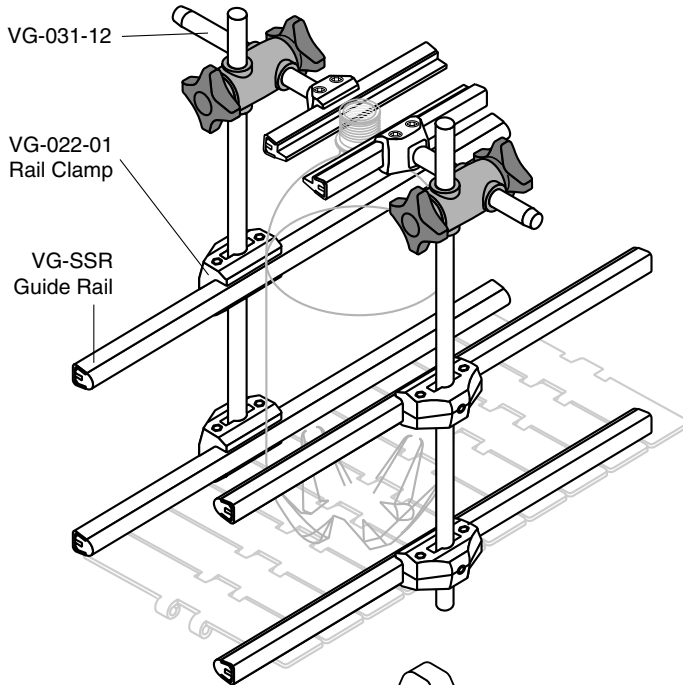


Heavy Duty Cross Blocks

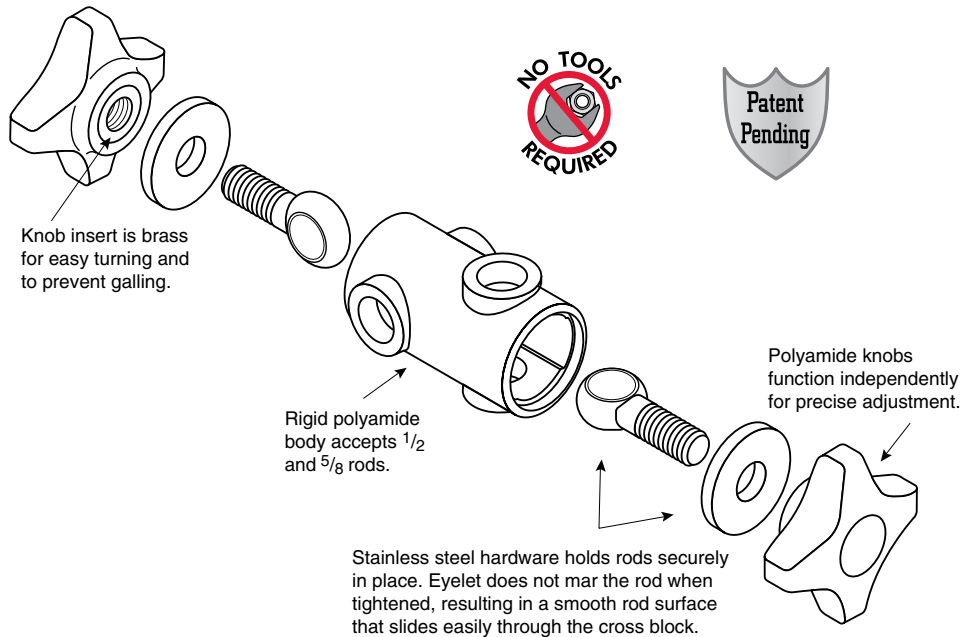


Valu Guide 621 series heavy duty cross blocks firmly hold two rods at 90°. When adjustment is necessary, a simple turn of the hand knob loosens the cross block's grip on the rod. When the adjustment is complete, retighten the hand knob to lock the new position in place. These heavy duty cross blocks are manufactured from corrosion resistant polyamide with stainless steel hardware which provide superior strength and rigidity.

The unique design of the 621 series cross blocks does not rely on set screws that can score and mar adjusting rods and subsequently hinder movement. Instead, we use an eyelet which firmly clamps around the adjusting rod for superior holding strength. Independent rod adjustment makes the 621 series easy to work with. Knob versions do not require any tools for adjustment. Variations on the cross block design include optional lock washer and nut tightening, stainless steel body designs, and 45° cross rod angles.



Brackets & Positioning



Solus



Heavy Duty Cross Blocks

■ In Stock items (subject to prior sales)

■ Items have 3 day lead time for assembly

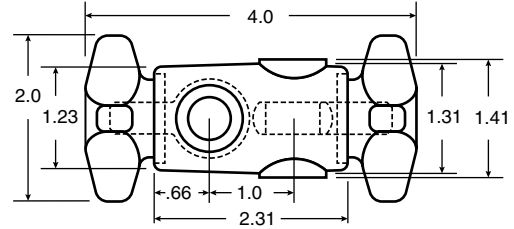
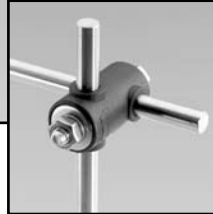
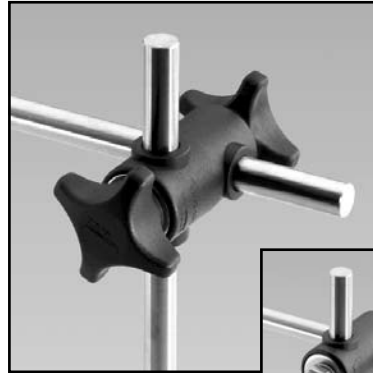
621 series

Cross Blocks

Connects two round rods at 90°. Versions available to hold $\text{\O}1/2$ and $\text{\O}5/8$ inch rods. Standard VG-621 cross blocks come with hand knobs on each side for quick adjustment.

VG-621NK features a hand knob on one side and a nut with lock washer on the other side. The hand knob side is ideal for frequent adjustments while the lock washer and nut side is suited to more permanent positioning.

VG-621NN is supplied with lock washers and nuts on both sides for holding rods in place when less frequent adjustments are necessary. Rods not included.



Material: Polyamide body and knobs with brass inserts. Stainless steel hardware.

Part Number with 2 Knobs	Part Number with 1 Knob and 1 Nut	Part Number with 2 Nuts	\O Rod	X	\O Rod
VG-621-12-12	VG-621NK-12-12	VG-621NN-12-12	1/2		1/2
VG-621-12-58	VG-621NK-12-58	VG-621NN-12-58	1/2		5/8
VG-621-58-58	VG-621NK-58-58	VG-621NN-58-58	5/8		5/8

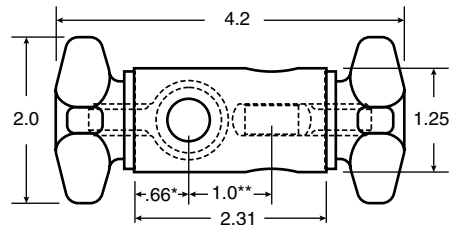
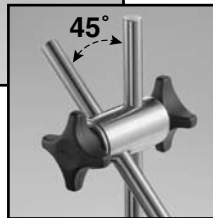
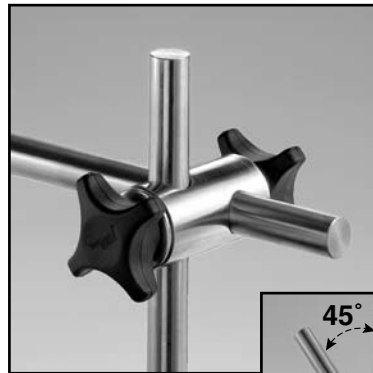
621S series

Stainless Steel Cross Blocks

VG-621S series connects two round rods at 90°. VG-621S-45 series connects two round rods at 45°. Versions available to hold $\text{\O}1/2$, $\text{\O}5/8$, and $\text{\O}3/4$ inch rods. Standard cross blocks come with hand knobs on each side for quick adjustment.

NK designated part numbers feature a hand knob on one side and a nut with lock washer on the other side. The hand knob side is ideal for frequent adjustments while the lock washer and nut side is suited to more permanent positioning.

NN designated part numbers are supplied with lock washers and nuts on both sides for holding rods in place when less frequent adjustments are necessary. NN versions of VG-621S series cross blocks are completely stainless steel. Rods not included.

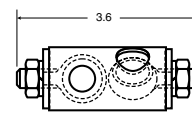
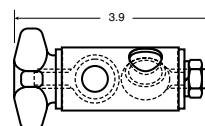
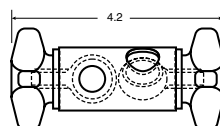
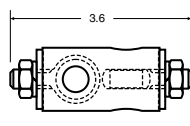
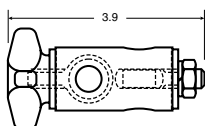


*.60 and **1.13 for 5/8 x 3/4 and 3/4 x 3/4 cross blocks

All Stainless Hi-Temp

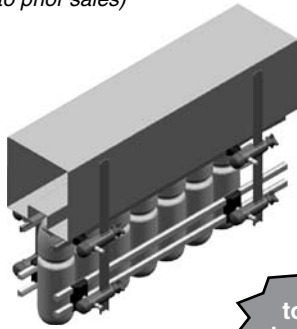
Material: Stainless steel body, polyamide knobs with brass inserts. Stainless steel hardware.

Part Number with 2 Knobs	Part Number with 1 Knob and 1 Nut	Part Number with 2 Nuts	Part Number with 2 Knobs, 45°	Part Number with 1 Knob and 1 Nut, 45°	Part Number with 2 Nuts, 45°	\O Rod	X	\O Rod
VG-621S-12-12	VG-621SNK-12-12	VG-621SNN-12-12	VG-621S-45-12-12R	VG-621SNK-45-12-12R	VG-621SNN-45-12-12R	1/2		1/2
VG-621S-12-58	VG-621SNK-12-58	VG-621SNN-12-58	VG-621S-45-12-58R	VG-621SNK-45-12-58R	VG-621SNN-45-12-58R	1/2		5/8
VG-621S-58-58	VG-621SNK-58-58	VG-621SNN-58-58	VG-621S-45-58-58R	VG-621SNK-45-58-58R	VG-621SNN-45-58-58R	5/8		5/8
VG-621S-12-34	VG-621SNK-12-34	VG-621SNN-12-34	-	-	-	1/2		3/4
VG-621S-58-34	VG-621SNK-58-34	VG-621SNN-58-34	-	-	-	5/8		3/4
VG-621S-34-34	VG-621SNK-34-34	VG-621SNN-34-34	-	-	-	3/4		3/4





In Stock items (subject to prior sales)



- Rapid and precise adjustments of guides to accommodate various bottle sizes.
- Fits 1/2" inch. diameter adjusting rods.
- Corrosion resistance composite components.
- Ergonomic spring loaded design.
- Quick and easy maintenance.



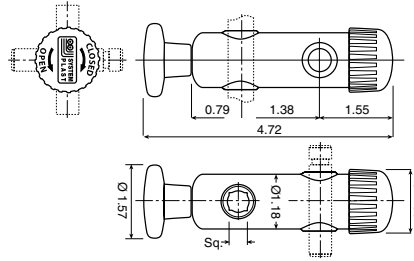
Twist to lock, twist back to unlock

33313

Quick Adjust Cross Blocks

Dual action cross blocks firmly hold two rods at 90°. When adjustment is necessary, a simple turn of the quick release cap loosens the cross block's grip on the rod. When the adjustment is complete, retighten the cap to lock the new position in place.

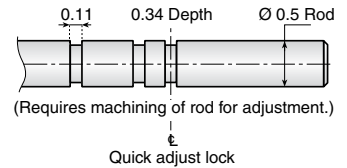
Requires custom grooved rod. Not included.



Material: Polyamide body, cap, and knob. Knob has stainless steel insert. Cap has nickel plated brass insert.

Part Number	Ø Rod (in.)	Ø Rod (in.)	Sq.
33313	1/2	1/2	7/16

1/2 round or 7/16 square rod

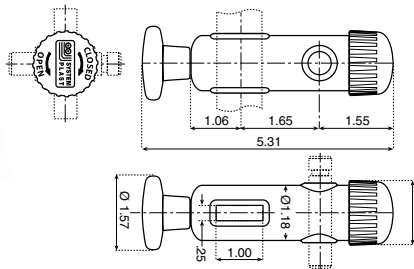


33262

Quick Adjust Cross Blocks

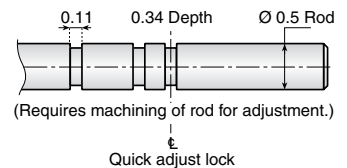
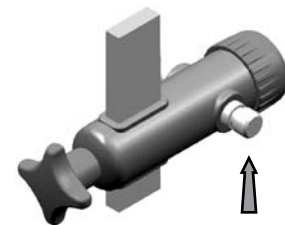
Dual action cross blocks firmly hold a rod and flat bar at 90°. When adjustment is necessary, a simple turn of the quick release cap loosens the cross block's grip on the rod. When the adjustment is complete, retighten the cap to lock the new position in place.

Requires custom grooved rod and flat bar. Not included.



Material: Polyamide body, cap, and knob. Knob has stainless steel insert. Cap has nickel plated brass insert.

Part Number	Ø Rod (in.)	Flat bar (in.)
33262	1/2	1 x 1/4



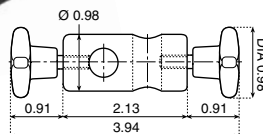
Brackets & Positioning

13182

LIGHT DUTY

Cross Blocks

Economically connects two round rods at 90°. Cross blocks come with hand knobs on each side for quick adjustment.



Material: Polyamide body and knobs. Knobs have stainless steel insert.

Part Number	Ø Rod (in.)
13182	1/2



Standard Cross Blocks

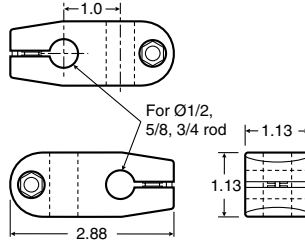
■ In Stock items (subject to prior sales)

■ Items have 3 day lead time for assembly

620

Rod to Rod Cross Block

Connects two round rods at 90°.



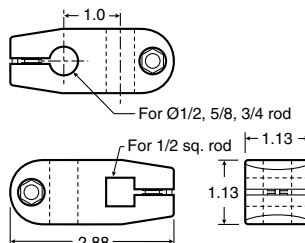
Material: Reinforced acetal with stainless steel bolt and nickel plated brass nut.

Part Number	Ø Rod	X	Ø Rod
VG-620-12-12	1/2		1/2
VG-620-12-58	1/2		5/8
VG-620-58-58	5/8		5/8
VG-620-34-34	3/4		3/4

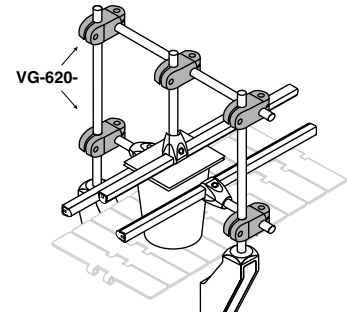
620-12SQ

Rod to Square Rod Cross Block

Connects one round rod and one square rod at 90°.



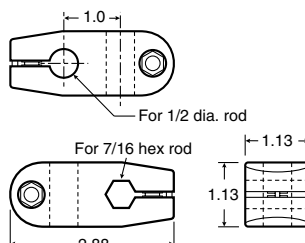
Part Number	Sq. Rod	X	Ø Rod
VG-620-12SQ-12	1/2		1/2
VG-620-12SQ-58	1/2		5/8
VG-620-12SQ-34	1/2		3/4



620-716HX

Rod to Hex Rod Cross Block

Connects one round rod and one hex rod at 90°.



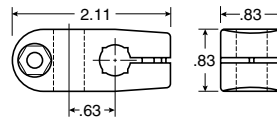
Part Number	Hex. Rod	X	Ø Rod
VG-620-716HX-12	7/16		1/2

Brackets & Positioning

619

Rod to Rod Cross Block

Connects one round rod and/or one square rod at 90°.



Accepts round rod or square rod!

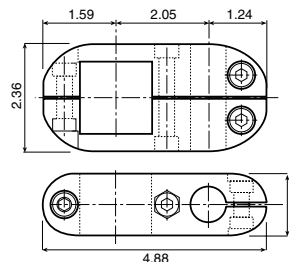
Material: Reinforced acetal with stainless steel bolt and nickel plated brass nut.

Part Number	Support Ø Rod (mm)
VG-619-10M	10mm/8mm sq.
VG-619-12M	12mm/10mm sq.
VG-619-14M	14mm/12mm sq.

335 series

Lane Divider Cross Blocks

Typically used in a bridge over conveyors to support lane dividers. Rod not included. Max recommended tightening torque is 21.7 ft-lbs.



Material: Polyamide body with stainless steel hardware.

Part Number	Ø Rod	X	Ø Rod
33512	1-1/2		5/8
33509	1-1/2		3/4

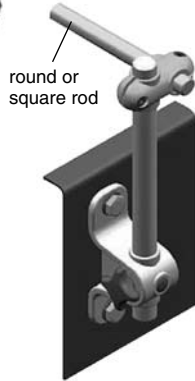
Standard Cross Blocks, Ratchet Handle and Sensor Mount

In Stock items (subject to prior sales)

300

Standard Cross Blocks

Connects two round or square rods at 90°. Rods not included.

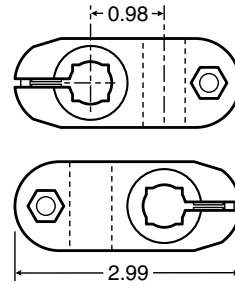


NEW

33151

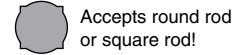
Standard Cross Blocks

Connects two round or square rods at 90°. Rods not included.



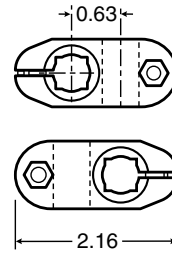
Material: Polyamide body with stainless steel fasteners.

Part Number	Ø Rod (in.)	Ø Rod X (in.)	Sq. Rod (in.)	Sq. Rod X (in.)
30001NV	1/2	1/2	7/16	7/16
30002NV	1/2	5/8	7/16	9/16
30011NV	1/2	3/4	7/16	5/8
30003NV	5/8	5/8	9/16	9/16
30015NV	5/8	3/4	9/16	5/8
30016NV	3/4	3/4	5/8	5/8



Material: Acetal body with stainless steel fasteners.

Part Number	Ø Rod (in.)	Ø Rod X (in.)	Sq. Rod (in.)	Sq. Rod X (in.)
33151	1/2	1/2	7/16	7/16



335HV

Lane Divider Cross Blocks with 2 Handles

For use in areas where frequent adjusting is required for horizontal and vertical movement.

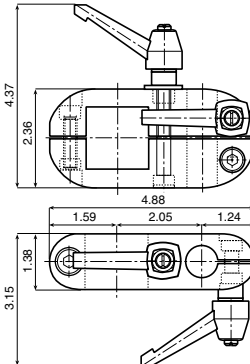
Rod not included.

Max recommended tightening torque is 21.7 ft-lbs.



Material: Polyamide body with stainless steel hardware. Polyamide handle with nickel plated brass insert.

Part Number	Ø Rod	X	Ø Rod
33512HV	1-1/2		5/8
33509HV	1-1/2		3/4



Brackets & Positioning

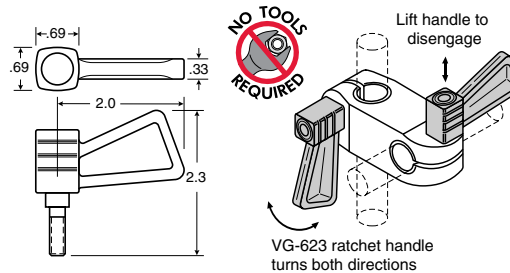
623

Ratchet Handle

Replaces fastener for easier adjustment. Used with VG-620 Cross Block. (Note: VG-621 Cross Blocks are functionally superior and more cost effective!)



See page 396 for additional ratchet handles.



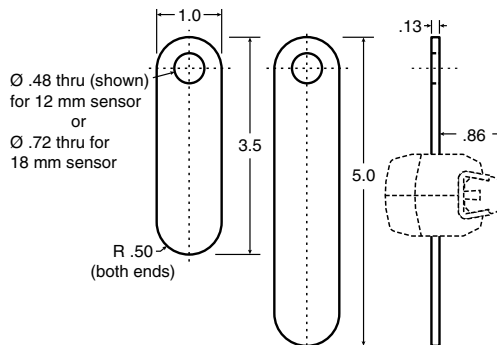
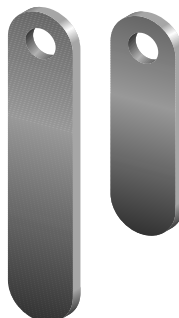
Material: Reinforced polyamide with stainless steel thread.

Part Number	Thread
VG-623-BK	1/4-20

612

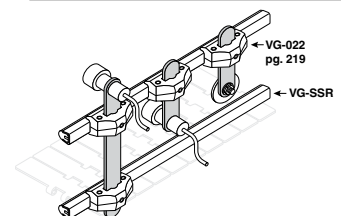
Sensor Mount

Accurately positions sensors and reflectors. Use with VG-022-01 rail clamp for ideal sensor mounting and quick adjustment, above or below guide rail.




Material: Stainless steel.

Part Number	Length(in.)	Sensor(mm)
VG-612-35-12	3.5	12
VG-612-35-18	3.5	18
VG-612-50-12	5	12
VG-612-50-18	5	18



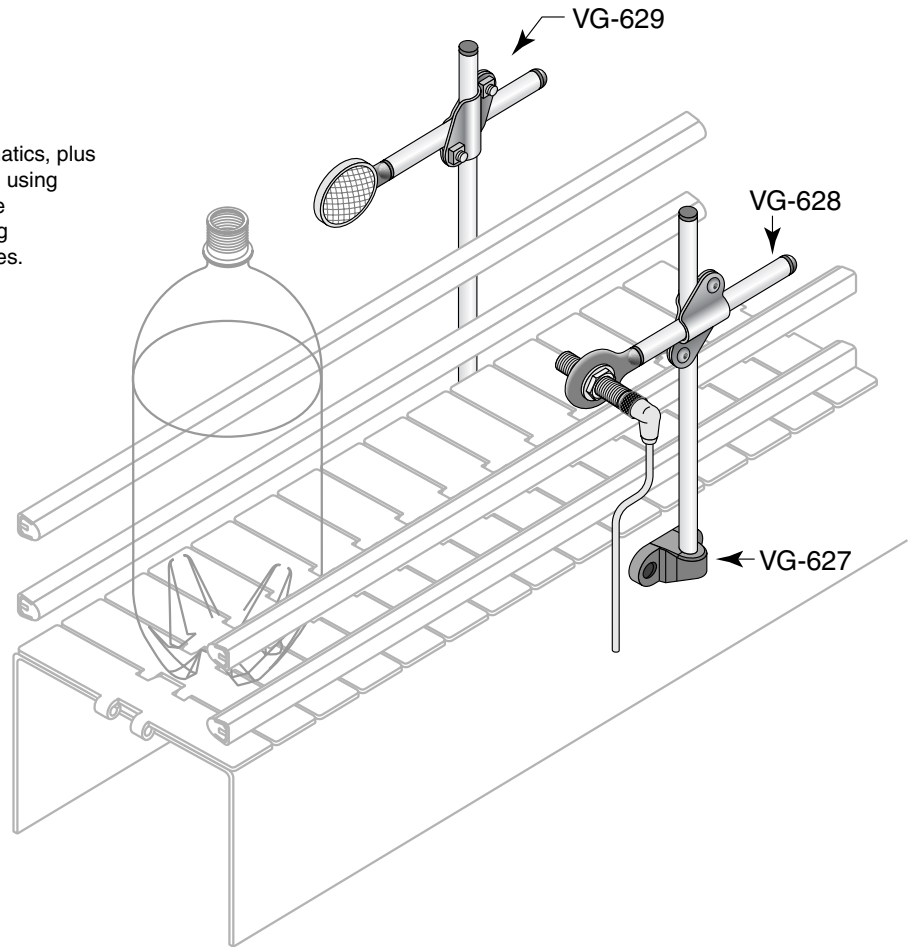


Accessory Holders

 In Stock items (subject to prior sales)

Universal Accessory Holders

Photocells, sensors, spray heads, miniature pneumatics, plus many other accessories can easily be held in place using accessory holders. These multi-axis assemblies are designed to offer unlimited possibilities for mounting accessories on conveyors and machinery of all types. Made of corrosion resistant thermoplastic and stainless steel, accessory holders can withstand harsh operating environments. Accessory holder assemblies are configured to hold either sensors or reflectors, and are available with Ø1/2 inch support rods. Each component is available individually.

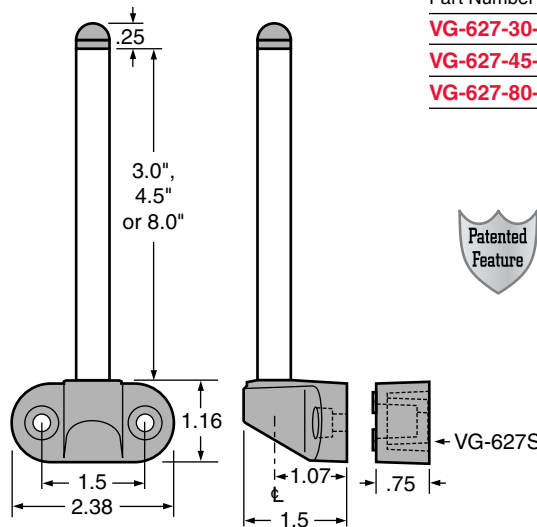
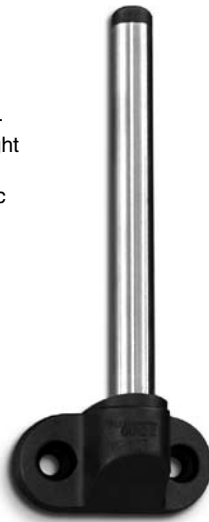


Brackets & Positioning

627

Molded T-Rod

Can be used as part of an accessory holding assembly, or as a light duty side mount bracket. Unique stainless steel and molded plastic design is strong, yet economical.



Material: Polyamide and stainless steel.

Part Number	Rod Length (in.)	Rod Ø (in.)
VG-627-30-12	3.0	1/2
VG-627-45-12	4.5	1/2
VG-627-80-12	8.0	1/2



Patent Numbers
6,427,829 B1
6,591,978

627S

T-Rod Offset Spacer

Plastic spacer is used to offset T-Rod from mounting surface. Multiples can be stacked.

Material: Polyamide.

Part Number	Thickness (in.)
VG-627S-34	3/4

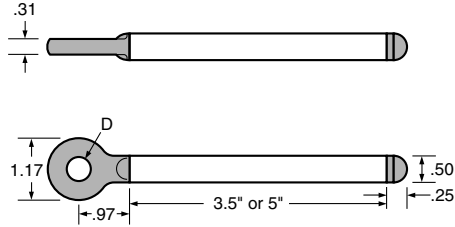


In Stock items (subject to prior sales)

628

Accessory Holder

This unique stainless steel and molded plastic design is a strong, yet economical method for holding many types of accessories. A variety of bore sizes are available.



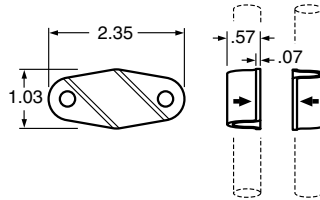
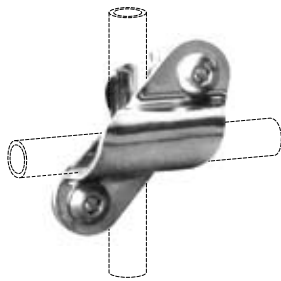
Material: Polyamide holder, stainless steel rod.

Part Number	Rod Length (in.)	Rod Ø (in.)	Accessory Hole Ø (D)
VG-628-35-12-14	3.5	1/2	.25
VG-628-35-12-38	3.5	1/2	.38
VG-628-35-12-12	3.5	1/2	.50
VG-628-35-12-58	3.5	1/2	.63
VG-628-35-12-34	3.5	1/2	.75
VG-628-50-12-14	5.0	1/2	.25
VG-628-50-12-38	5.0	1/2	.38
VG-628-50-12-12	5.0	1/2	.50
VG-628-50-12-58	5.0	1/2	.63
VG-628-50-12-34	5.0	1/2	.75

629

Cross Clamp

Stainless steel clamp used to connect two Ø1/2 inch round rods at 90°. Fastening hardware is included.

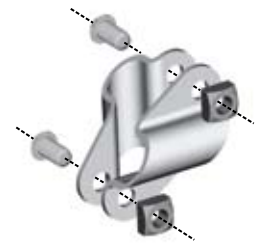


Material: Stainless steel.

Part Number	Rod Ø (in.)	X	Rod Ø (in.)
VG-629-12-12	1/2		1/2



Patent No.
6,579,032,B1
6,786,672,B2

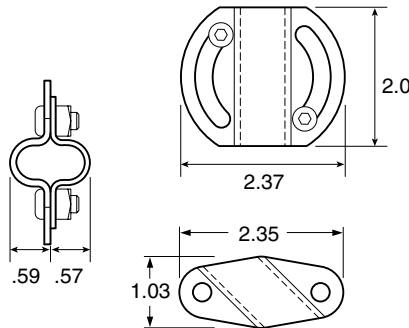
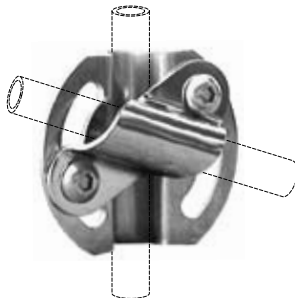


Brackets & Positioning

629R

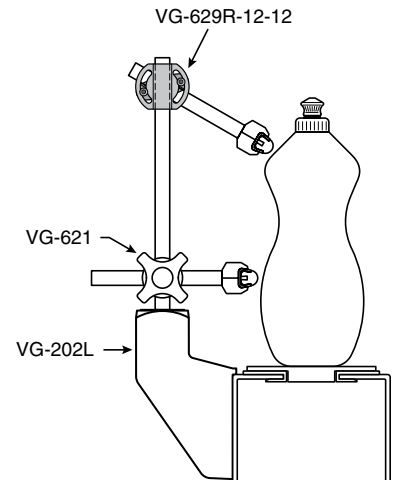
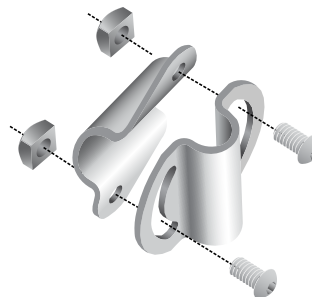
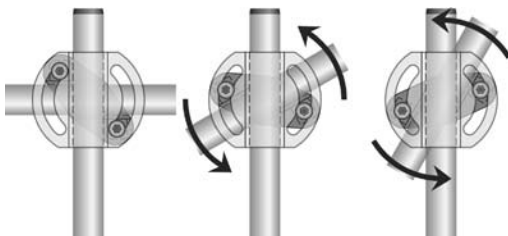
Rotating Cross Clamp

Stainless steel clamp used to connect two Ø1/2 inch round rods at any angle. Fastening hardware is included.




Material: Stainless steel.

Part Number	Rod Ø (in.)	X	Rod Ø (in.)
VG-629R-12-12	1/2		1/2





Mounts for Photocells or Reflectors

 In Stock items (subject to prior sales)

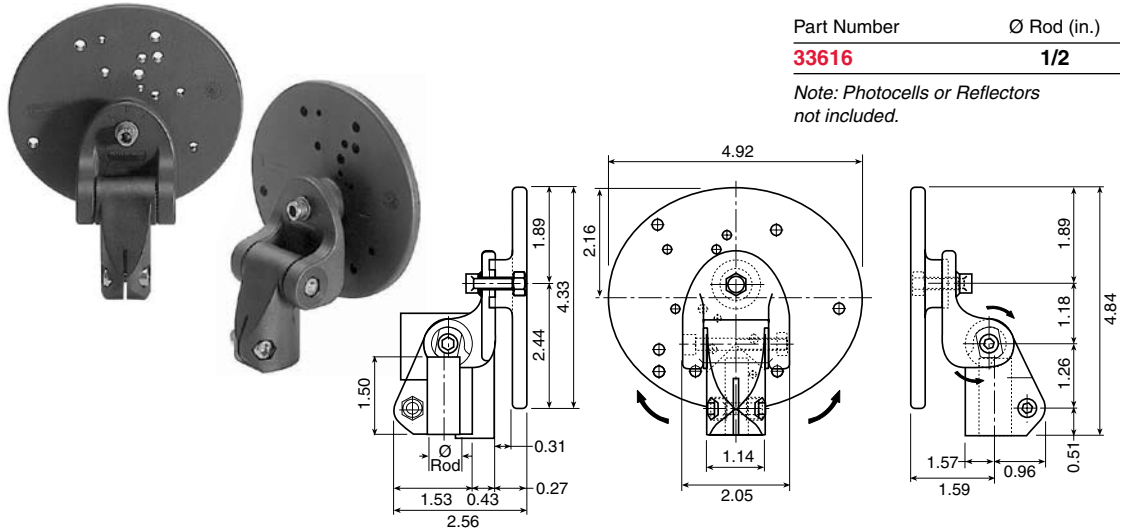
Material: Reinforced polyamide clamp with stainless steel bolt.

33616

Universal Mount for Photocells or Reflectors

Used to hold photocells or reflectors.

Max recommended tightening torque 14.4 ft-lbs.

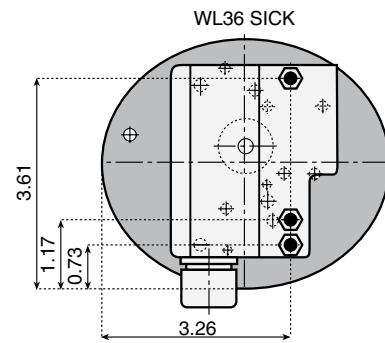
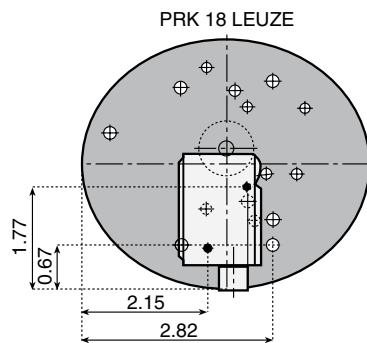
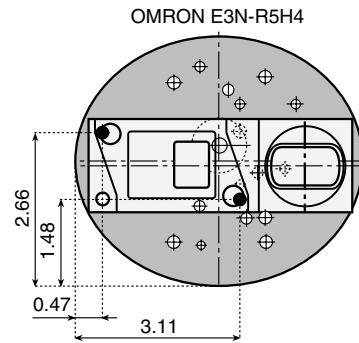
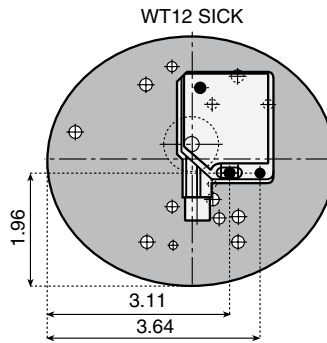
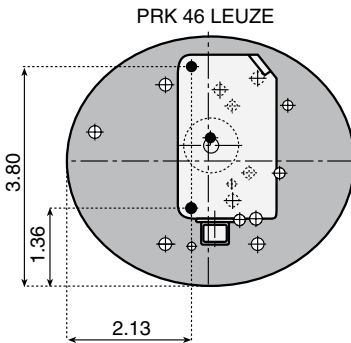
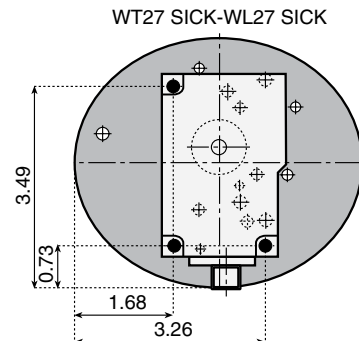
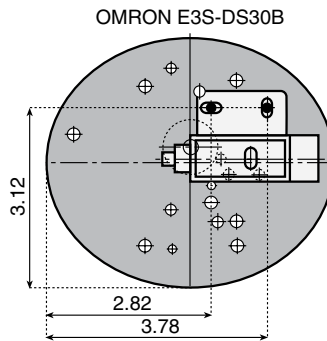
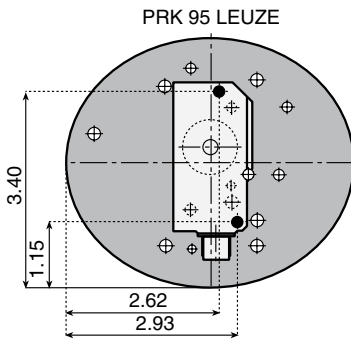


Part Number	Ø Rod (in.)
33616	1/2

Note: Photocells or Reflectors not included.

Suitable Photocell Types

Brackets & Positioning





In Stock items (subject to prior sales)

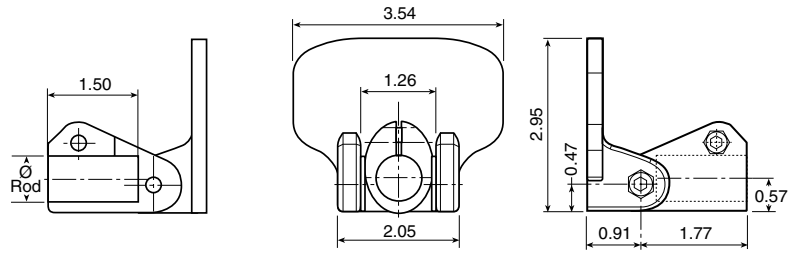
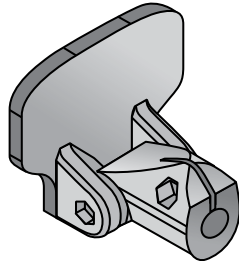
33500

Mount for Photocells or Reflectors

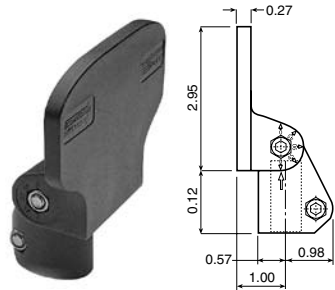
Used to hold photocells or reflectors.
Can be fitted in three different positions.

Material: Reinforced polyamide clamp with stainless steel bolts.

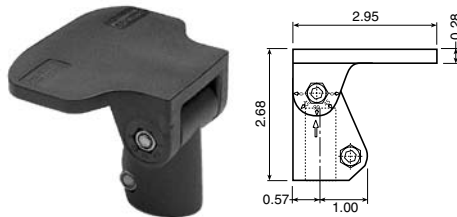
Part Number	Ø Rod (in.)
33500	1/2



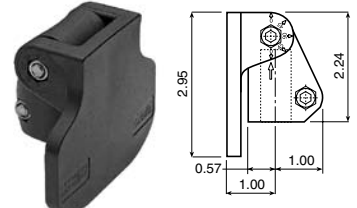
Note: Photocells or Reflectors not included.



Position - A



Position - B

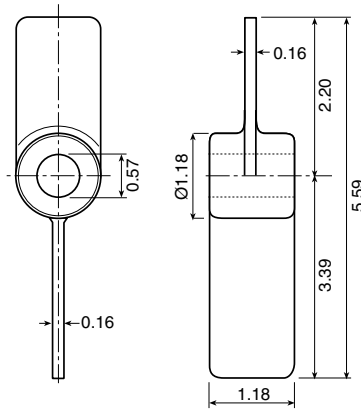


Position - C

13150

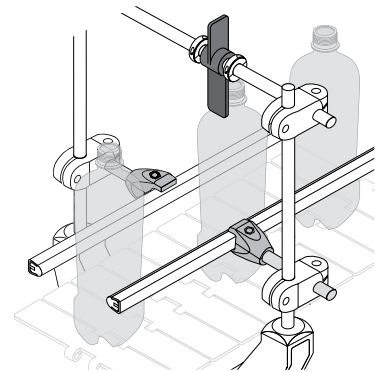
Bottle Indicator

Used to activate photocells on conveyors and machines.



Material: Reinforced polyamide.

Part Number
13150

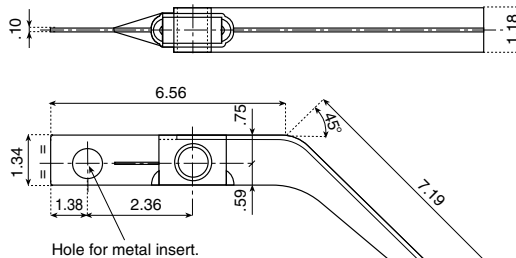
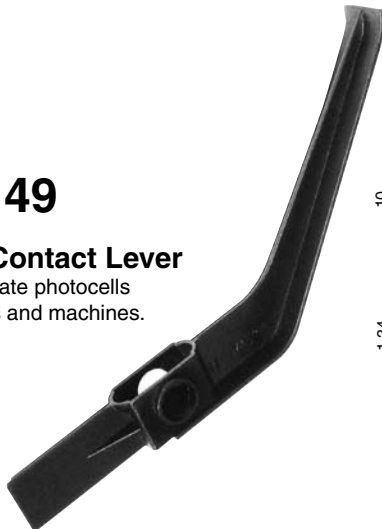


Brackets & Positioning

13149

Control Contact Lever

Used to activate photocells on conveyors and machines.



Hole for metal insert.

Material: Reinforced polyamide.

Part Number	
13149	with hole
13149SF	without hole



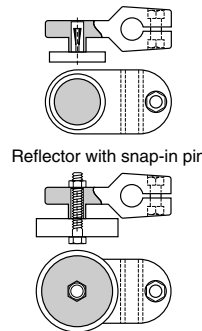
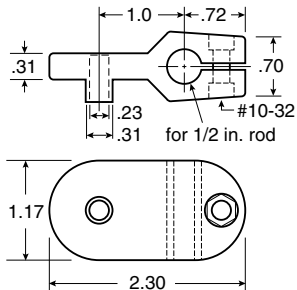
Accessory Mount Components for 1/2" Rod

In Stock items (subject to prior sales)

614

Reflector Mount

Used to hold reflectors using a cap screw and nut or press-in clip onto Ø1/2 inch support rods.



Reflector with bolt and nut

Material: Reinforced polyamide body with stainless steel fasteners.

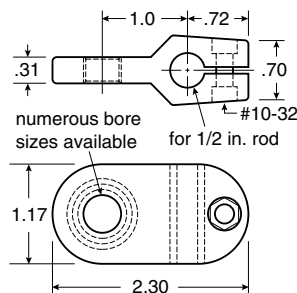
Part Number	Ø Rod (in.)
VG-614-12	1/2

Note: Reflectors not included.

618

Accessory Holder

Used to hold many types of accessories onto Ø1/2 inch support rods. A variety of bore sizes are available.



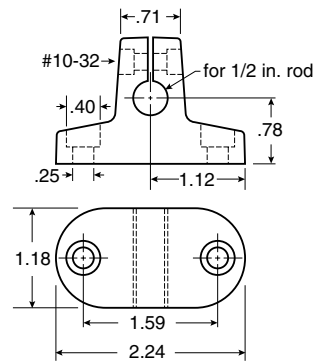
Material: Reinforced polyamide body with stainless steel fasteners.

Part Number (in.)	Support Ø Rod (in.)	Accessory Ø Bore
VG-618-12-14	1/2	1/4
VG-618-12-38	1/2	3/8
VG-618-12-12	1/2	1/2
VG-618-12-58	1/2	5/8
VG-618-12-34	1/2	3/4

617

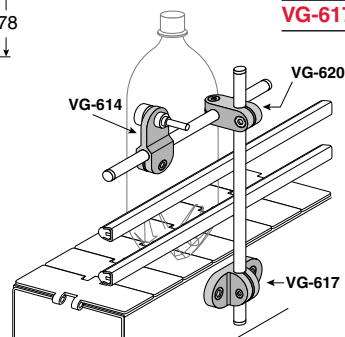
T-Clamp

Mounts to side of equipment to provide support for light duty rod type guide rail systems. Part of the VG-615 series accessory holder assembly.



Material: Reinforced polyamide body with stainless steel fasteners.

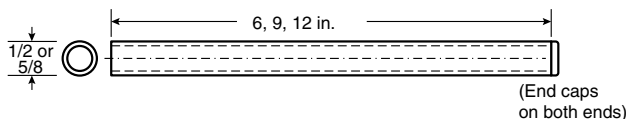
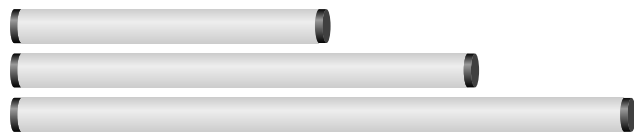
Part Number	Ø Rod (in.)
VG-617-12	1/2



215

Support Rods

Available in three lengths, these rods can be used with accessory cross blocks, holders and clamps. They are made from 1/2 and 5/8 inch OD stainless steel tubing. The ends are capped with a black polyethylene plug.



Material: Stainless steel tube. Black polyethylene end caps.

1/2" Part Number	5/8" Part Number	Length (in.)
VG-215-06-12T	VG-215-06-58T	6
VG-215-09-12T	VG-215-09-58T	9
VG-215-12-12T	VG-215-12-58T	12

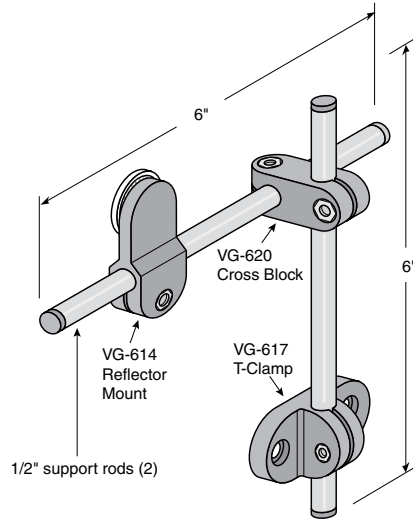


VG-615R-12 consists of the following parts:

615R

Reflector Mounting Assembly

The assembly for holding reflectors is available with $\text{\O}1/2$ inch support rods and corresponding attachments.



Material: Corrosion resistant thermoplastic parts with stainless steel fasteners. Stainless steel tubes with plastic insert caps.

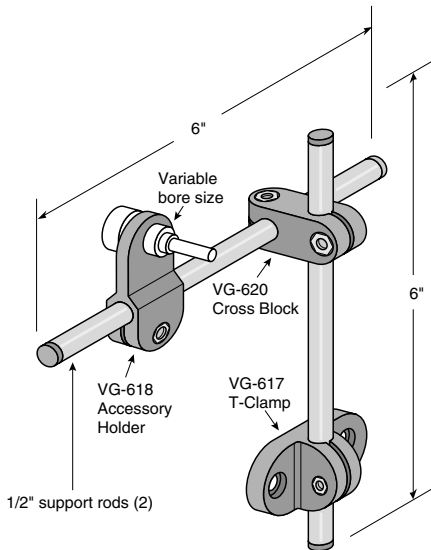
Part Number	\O Support Rod (in.)
VG-615R-12	1/2

VG-615A-12- assemblies consist of the following parts:

615A

Sensor Mounting Assembly

The assembly for holding sensors is available with $\text{\O}1/2$ inch support rods and corresponding attachments. The accessory holder attachment is available in a variety of bore sizes as shown in the part number table.



Part Number	Support \O Rod (in.)	Accessory Holder \O Bore (in.)
VG-615A-12-14	1/2	1/4
VG-615A-12-38	1/2	3/8
VG-615A-12-12	1/2	1/2
VG-615A-12-58	1/2	5/8
VG-615A-12-34	1/2	3/4

Brackets & Positioning



Accessory Mount Components for 10mm Rod

In Stock items (subject to prior sales)

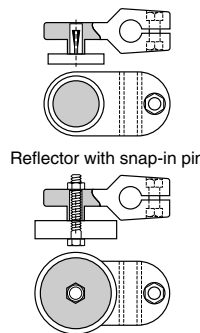
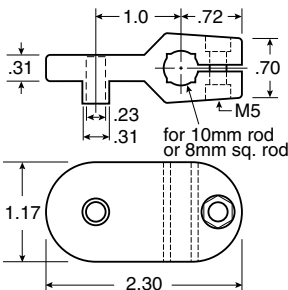
614-10M

Reflector Mount

Used to hold reflectors using a cap screw and nut or press-in clip onto Ø10mm support rods.



Accepts 10 mm round rod or 8 mm square rod!



Reflector with bolt and nut

Material: Reinforced polyamide body with stainless steel fasteners.

Part Number	Ø Rod (mm)
VG-614-10M	10mm/8mm sq.

Note: Reflectors not included.

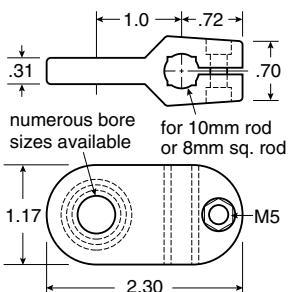
618-10M

Accessory Holder

Used to hold many types of accessories onto Ø10mm support rods. A variety of bore sizes are available.



Accepts 10 mm round rod or 8 mm square rod!



Part Number	Support Ø Rod (mm)	Accessory Ø Bore (mm)
VG-618-10M-6	10mm/8mm sq.	6
VG-618-10M-10	10mm/8mm sq.	10
VG-618-10M-12	10mm/8mm sq.	12
VG-618-10M-16	10mm/8mm sq.	16
VG-618-10M-19	10mm/8mm sq.	19

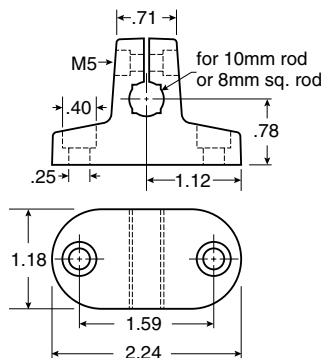
617-10M

T-Clamp

Mounts to side of equipment to provide support for light duty rod type guide rail systems. Part of the VG-615 series accessory holder assembly.



Accepts 10 mm round rod or 8 mm square rod!



Part Number	Support Ø Rod (mm)
VG-617-10M	10mm/8mm sq.

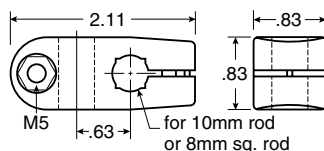
619-10M

Rod to Rod Cross Block

Connects two 10mm round rods or 8mm square rods at 90°. Part of the VG-615R-10M or VG-615A-10M accessory holder assembly.



Accepts 10 mm round rod or 8 mm square rod!

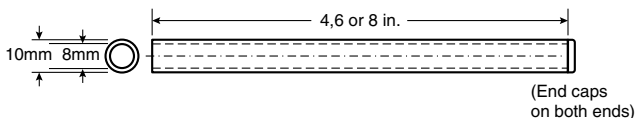


Part Number	Support Ø Rod (mm)
VG-619-10M	10mm/8mm sq.

616

Ø 10mm Support Rod

This 10mm OD stainless steel tube can be used with accessory cross blocks, holders and clamps. The ends are capped with a black polyethylene plug.



Material: Stainless steel tube. Black polyethylene end caps.

Part Number	Length (in.)
VG-616-04-10M	4
VG-616-06-10M	6
VG-616-08-10M	8



Brackets & Positioning

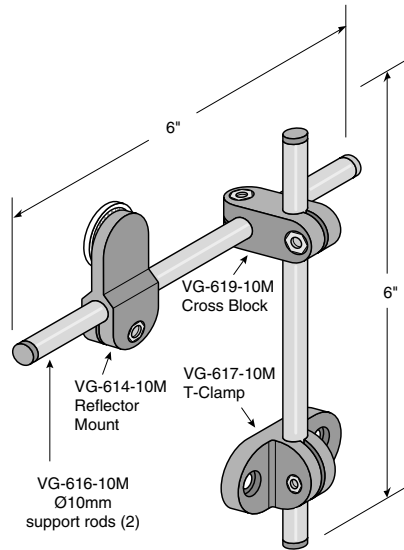


VG-615R-10M consists of the following parts:

615R-10M

Reflector Mounting Assembly

The assembly for holding reflectors is available with Ø10mm support rods and corresponding attachments.



Material: Corrosion resistant thermoplastic parts with stainless steel fasteners. Stainless steel tubes with plastic insert caps.

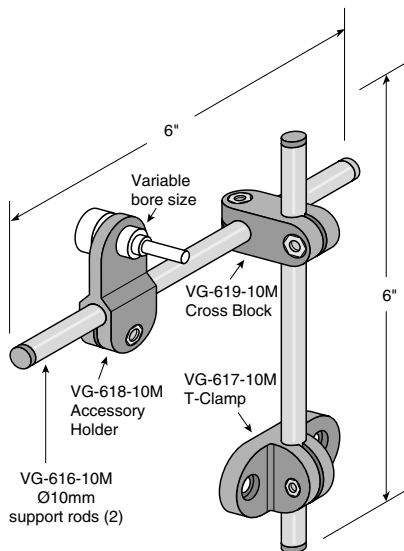
Part Number	Ø Support Rod
VG-615R-10M	10mm

VG-615A-10M- assemblies consist of the following parts:

615A-10M

Sensor Mounting Assembly

The assembly for holding sensors is available with Ø10mm inch support rods and corresponding attachments. The accessory holder attachment is available in a variety of bore sizes as shown in the part number table.



Part Number	Support Ø Rod (mm)	Accessory Ø Bore (mm)
VG-615A-10M-6	10mm	6
VG-615A-10M-10	10mm	10
VG-615A-10M-12	10mm	12
VG-615A-10M-16	10mm	16
VG-615A-10M-19	10mm	19

Brackets & Positioning



Locking Shaft Collars

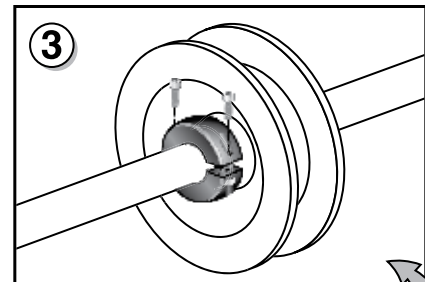
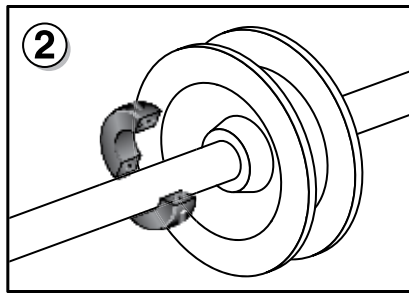
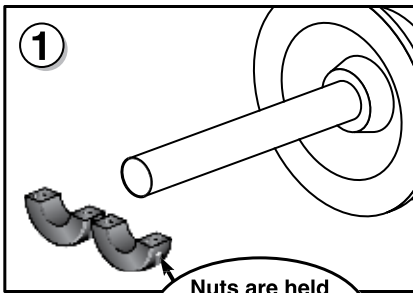
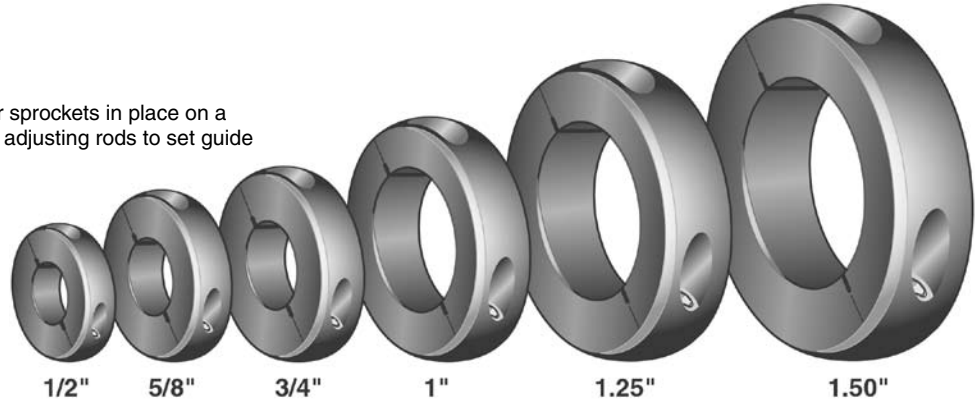
In Stock items (subject to prior sales)

SC

Locking Shaft Collars

For holding idler wheels or various other sprockets in place on a shaft. Also can be used with Valu Guide adjusting rods to set guide rail positions for two container sizes.

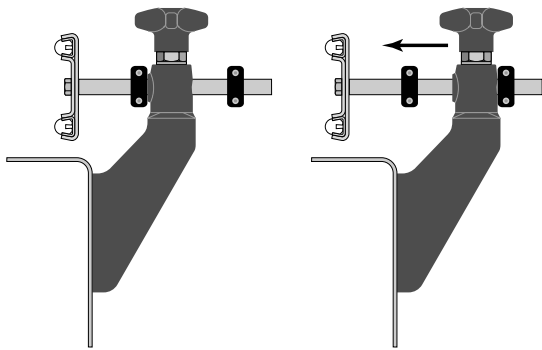
- Available with or without keyways.
- Convenient hinge keeps parts together for easy installation.
- Fastening hardware included.



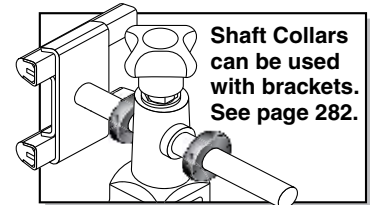
Shaft Collars can be used with idler wheels. See page 100.

Brackets & Positioning

Pre-set, repeatable adjustments!

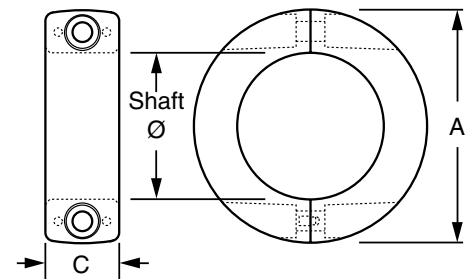


Shaft Collars can be used with Nolu-S bearings. See page 180.



Shaft Collars can be used with brackets. See page 282.

Easy to install on existing lines!



Material: Polyamide ring with stainless steel and nickel plated brass hardware.

Part Number	with keyway	A	Shaft Ø	C	keyway
VG-SC-12	-	1.10	1/2"	.46	-
VG-SC-58	-	1.22	5/8"	.46	-
VG-SC-34	-	1.50	3/4"	.55	-
VG-SC-100	VG-SCK-100	1.75	1"	.55	1/4"
VG-SC-125	VG-SCK-125	2.00	1-1/4"	.63	1/4"
VG-SC-150	VG-SCK-150	2.50	1-1/2"	.70	3/8"

SCK

Locking Shaft Collars with Keyway

For holding sprockets or idler wheels on keyed shafts.

